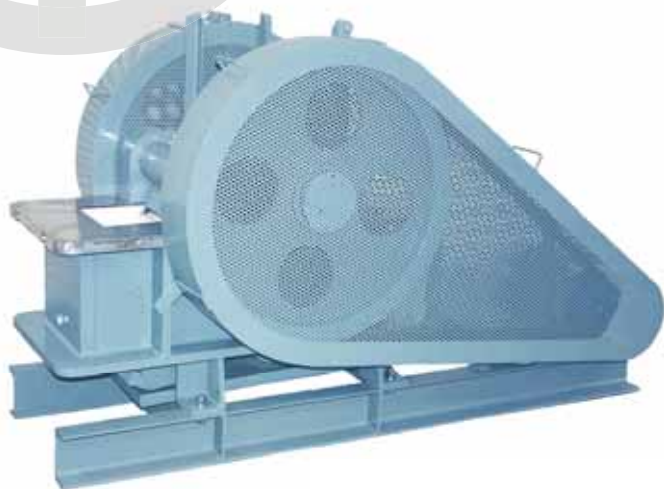


ジョークラッシャー Jaw Crusher

重負荷仕様 Standard Type



アルミナセラミックプレート Alumina ceramic plates

動歯と固定歯
Swing plate & fixed plate

歯の材質にはセラミック、鉄、マンガン等があります。
There are alumina ceramic, iron, manganese etc.
for plate materials.

ジョークラッシャー(重負荷仕様)

固定歯と動歯の間に原料を落とし込み強力な圧縮作用によって原料を破碎する粗砕機です。アルミナセラミックの場合のモース硬度は9で耐摩耗性に富んでいるため原料への不純物の混入が少なく製品の純度がたもてます。

Jaw Crusher (Standard Type)

Designed as a coarse crushing machine equipped with two toothed rigid ceramic plates. One is a fixed plate and the other swings against it in a crushing motion. When the material is fed between these plates, it is crushed by a strong compressive force. Product purity can be maintained at high levels because the wear-resistant plates have a Morse hardness of 9. This also ensures high-end product purity.

ジョークラッシャー Jaw Crusher

中・軽負荷仕様 Compact Type



ジョークラッシャー(中・軽負荷仕様)

本機は動歯の動きがダブルトグル式に似てシングルトグルのような円運動のすべり動作がなく、前後の動きのみでセラミック歯の消耗が少なくてすみます。軸受部分をすべて密封構造にして油が床に漏れるのを防いでいます。一度焼成等を施した中硬度以下の原料を更に砕いたりほぐしたりするのに使われます。

Jaw Crusher (Compact Type)

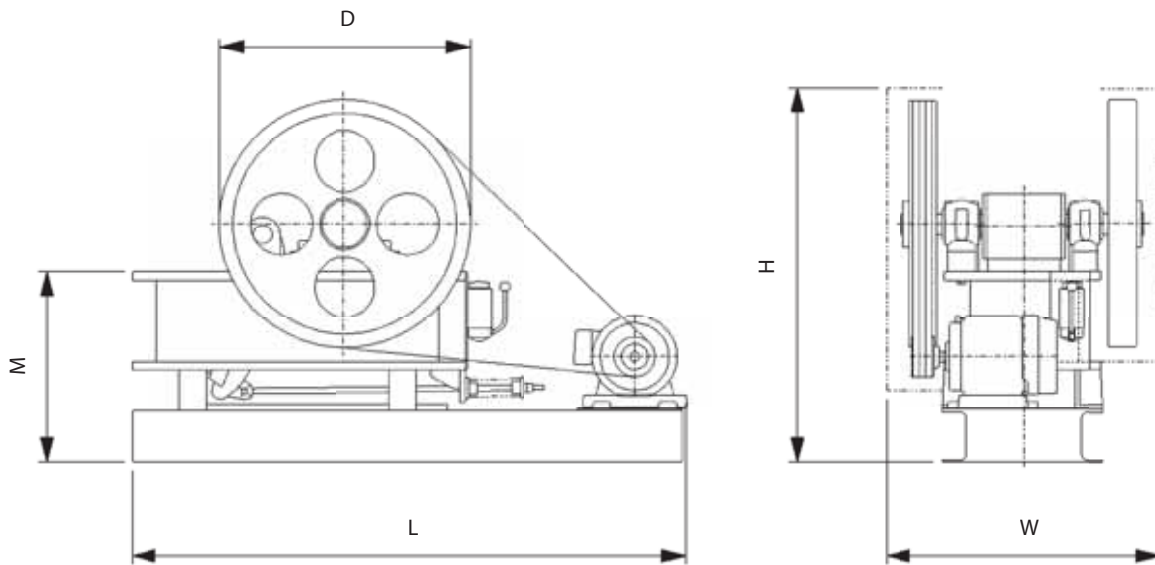
In this machine the movement of ceramic plate is similar to the movement of Double toggle (joint) that decreases to wear out of ceramic plates by the only back and forth movements of swing plate, while usual single toggle has up and down movements also which make plate slide and worn out.

The bearing part is all sealed to prevent dropping of oil leakage to the floor.

This compact type is suitable for re-crushing or re-breaking into small pieces once fired materials and the like which is not so hard.

ご注意: セラミックの歯板は硬く摩耗に強いですが、鉄等砕けにくい異物の混入は歯板を破損させることがありますのでお避け下さい。また水分があると歯板の摩耗を早めます。

Note: Although ceramic plate is hard and wear-resistant, moisture content and substances such as iron etc which are difficult to be crushed must be avoided into raw material that causes plate breakage.


Jaw Crusher (Standard Type)

Size Unit : mm (Approximate values) 概算寸法

単位:ミリメートル

Model No.	D	H	L	M	W
C 1	730	1100	1600	554	700
C 2	730	1100	1600	560	800
C 3	800	1155	2015	600	900

Above sizes may change when improvements are required.

Model 型番	inlet size (m/m) 給鉱口寸法	input material size (max) 供給最大寸法	capacity (t/h) 破砕能力		discharge (m/m) 排出寸法		kW 動力
			10 (m/m)	15 (m/m)	20 (m/m)	30 (m/m)	
C 1	175×100	80 [□] ×160	0.5 t	0.8 t	1 t		2.2~3.7
C 2	200×125	100 [□] ×180	0.8 t	1.2 t	2 t		3.7~5.5
C 3	250×150	120 [□] ×200	1.5 t	2 t	3 t	4.5 t	5.5~7.5

*原料等種々の条件により異なります。

*Above capacity may change according to input material and other condition.